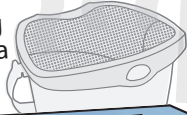


Your new Sure-Close^{inc.} container features:

NEW

Vented Lid

Allows moisture to evaporate reducing odour causing bacteria



Stay open lid

Lid stays open at 90° making it easier to fill



Adjustable lid stops

To make lid easier or harder to open & close, adjust curve on back of container by bending in or out



Removable lid

Pop off lid for easy cleaning



Interlocking seal

Ensures foodscraps stay in if accidentally dropped



Back grip

Easy to lift and carry



Letterbox design

Angled opening and high backsplash makes it easier to scrape plates



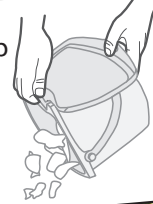
Wide opening

Easy to scrape food from large plates



Bottom grip

Makes it easy to tip contents out



Easy clean surfaces

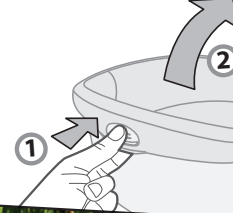
Smooth surfaces and edges provide easy cleaning. Dishwasher safe - No heat dry

Container feet

4 feet on the bottom allow airflow, and cleaner worksurface



Latch closure



Latch tuning

To loosen, push latch button towards body of the container and hold for 5 seconds

Comments/Questions Please e-mail Comments@Sure-Close.com

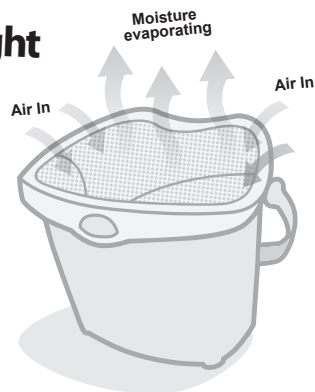
YOUR Sure-Close^{inc.} GUIDE

getting the most from your Sure-Close^{inc.} foodscrap collection container

MAXIMUM ODOR CONTROL

The Sure Close innovative lid design provides many advantages over other compost containers. The lid's small ventilation holes and interior airflow channels allow air to circulate through the container. Moisture evaporates out through the lid, which dries foodscrap and prevents odour-causing bacteria. Sure Close in-home compost container ensures :

- **Reduced odor**
- **No wet lid**
- **Reduced weight**



EASY TO FILL, CARRY, EMPTY & CLEAN

- **Stays closed if accidentally dropped !**

Strong, rugged closure.

- **Stay up lid**

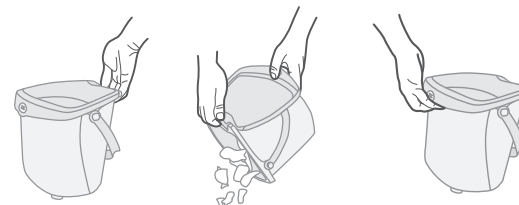
Lid stays open at 90° making it easier to fill.

- **Easy to grasp & open**

Large clasp is easy to manipulate.

- **Many grips**

The lid can be gripped on all sides and on bottom for emptying.



- **Removable lid**

Removable lid and smooth upper edge makes bin easy to clean.

- **Odor & blemish resistant HDPE**

Durable & recyclable.

Comments/Questions Please e-mail Comments@Sure-Close.com